



# GENUS HE PLUS

WALL-HUNG HIGH EFFICIENCY  
STORAGE COMBINATION BOILER



Achieving new levels of  
comfort and efficiency



# GENUS HE PLUS

35 FF

WALL-HUNG HIGH EFFICIENCY  
GAS STORAGE COMBINATION BOILER

**2** FREE  
2 year  
guarantee



QUIET  
OPERATION



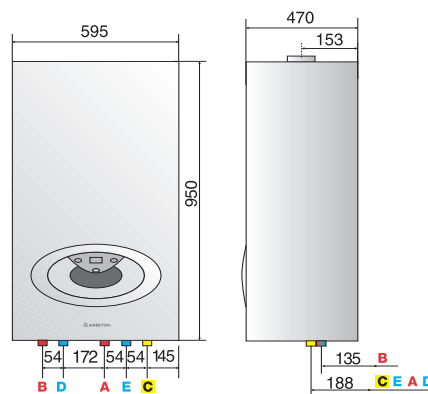
ENERGY  
EFFICIENT

- SEDBUK BAND A
- INSTANT & CONTINUOUS HOT WATER AT HIGH FLOW RATES
- 42 LITRE INTEGRAL HOT WATER STORAGE TANK
- REVERTS TO 'COMBI MODE' AS STORE IS DEPLETED
- BUILT-IN MECHANICAL TIME CLOCK

- AUTO DIAGNOSTIC SYSTEM
- SIMPLE MAINTENANCE WITH ACCESS FROM THE FRONT OF THE APPLIANCE
- ANTI-FROST AND ANTI-SCALE DEVICE
- BUILT-IN AUTOMATIC BY-PASS
- INCLUDES CONNECTION KIT AND FILLING LOOP



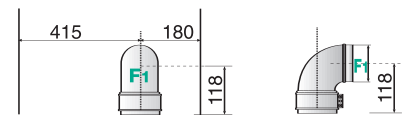
band *A*  
*hot water* comfort  
*energy* saving



LEGEND

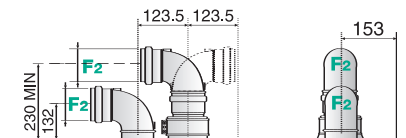
- A: Central heating flow 22mm compression
- B: Domestic hot water outlet 15mm compression
- C: Gas inlet 15mm compression
- D: Domestic hot water inlet 15mm compression
- E: Central heating return 22mm compression
- F: Flue (Ø mm)  
F1: 60/100 - 80/125  
F2: 80

Coaxial exhaust



Ø60/100: up to 8m  
Ø80/125: up to 28m

Twin pipe exhaust



Ø80/80: up to 62m

## Technical Information

		GENUS HE 35 PLUS
<b>EFFICIENCY</b>		
SEDBUK/HARP Rating	Band	A
SAP efficiency	%	90.3
<b>POWER &amp; PERFORMANCE</b>		
Heat input max.	kW - Btu/h	34.5 - 117,700
Heat input min.	kW - Btu/h	7.0 - 23,800
Heat output max. (C.H.)	kW - Btu/h	30.0 - 102,300
Heat output max. (D.H.W.)	kW - Btu/h	35.0 - 119,400
Heat output min.	kW - Btu/h	6.0 - 20,400
Central heating temp. max. (high temp.)	°C	82
Central heating temp. min. (high temp.)	°C	42
Central heating temp. max. (low temp.)	°C	75
Central heating temp. min. (low temp.)	°C	25
D.H.W. temperature maximum	°C	70
D.H.W. temperature minimum	°C	40
Stored D.H.W. capacity	l	42
D.H.W. flow rate $\Delta T = 35^{\circ}\text{C}$	l/min	18
D.H.W. flow rate $\Delta T = 35^{\circ}\text{C}$	gal/min	3.9
<b>CHARACTERISTICS</b>		
Minimum ambient temperature	°C	5
D.H.W. minimum flow rate	l/min	2.0
Domestic hot water pressure maximum	bar	10
Domestic hot water pressure minimum	bar	0.3
Built-in expansion vessel capacity (CH/DHW)	l	7/4
Built-in expansion vessel pre-charge pressure (CH/DHW)	bar	0.7/3.0
Maximum heating pressure	bar	3
Servicing clearances - top/front/bottom	mm	250/450/200
Servicing clearances - left/right	mm	20/20
Zero compartment ventilation		Yes
Weight	kg	60
<b>ELECTRICAL DATA</b>		
Electrical supply	V/Hz	230/50
Power consumption	W	150
Protection grade of electrical system	IP	44
Internal fuse rating		2A Fast Fuse

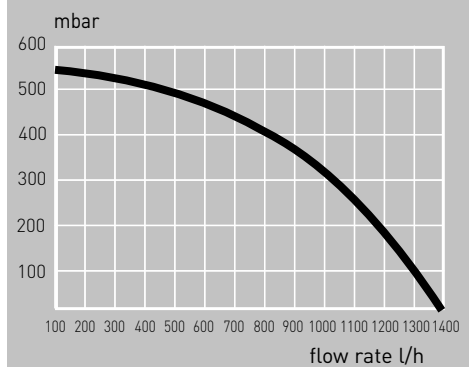
PRODUCT CODE 3665006

## Accessories

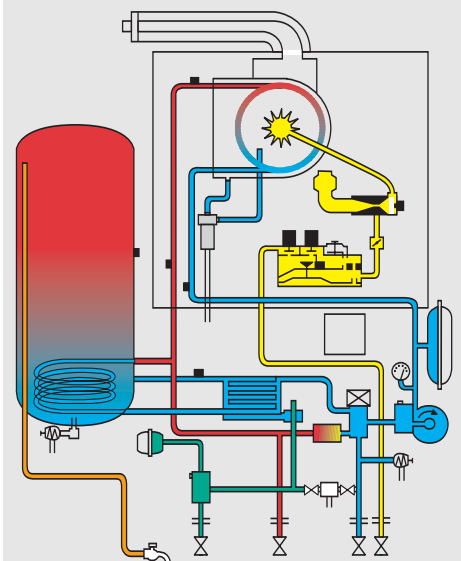
	Code
<b>GENERAL ACCESSORIES</b>	
System Cleaner	705998

*simple  
controls*

Graph of boiler residual head  $\Delta T 20^{\circ}\text{C}$



ROOM SEALED FAN FLUE





MTS (GB) Limited  
MTS Building  
Hughenden Avenue  
High Wycombe  
Bucks HP13 5FT  
Telephone 01494 755600  
Fax 01494 459775

Technical Advice & Customer Service  
Fax 01494 463066  
technical@uk.mtsgroup.com  
info@uk.mtsgroup.com

[www.ariston.co.uk](http://www.ariston.co.uk)

Professional Team Limited  
Plaza 256  
Blanchardstown Corporate Park 2  
Ballycoolin  
Dublin 15  
Telephone 01 810 3723  
Fax 01 810 3727

Technical Advice & Customer Service  
Fax 01 810 3727  
technical@ie.mtsgroup.com  
info@ie.mtsgroup.com

[www.mtsgroup.com/ie](http://www.mtsgroup.com/ie)

 **0870 241 8180**  
technical advice

 **0870 600 9888**  
customer service